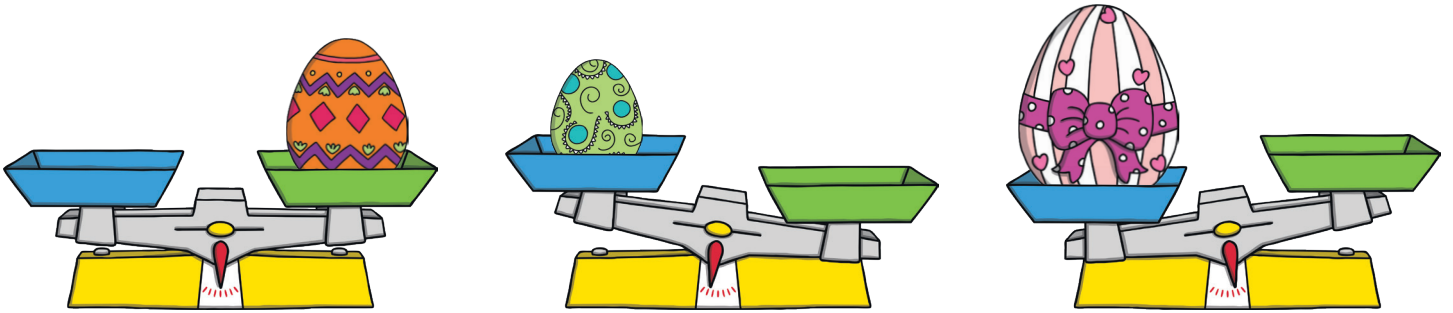


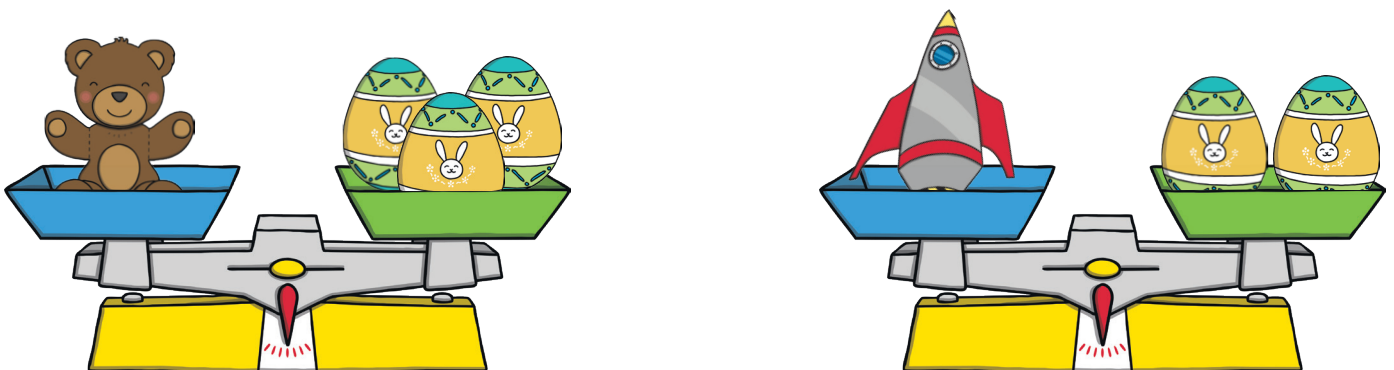
# Easter Weight

1. Draw a line to match the Easter egg with the correct scale.



2. Which sentences are true? Tick them.

- The teddy bear is heavier than the rocket.
- The rocket is heavier than the teddy bear.
- The teddy bear is lighter than the rocket.
- The rocket is lighter than the teddy bear.
- The teddy bear and the rocket weigh the same amount.

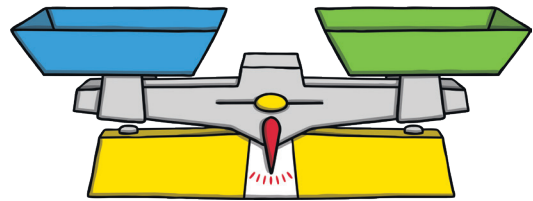
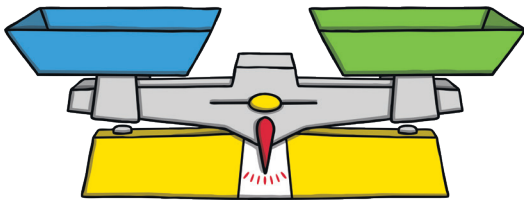


## Easter Weight

3. Can you make your own Easter balancing scales for your partner? Ask your partner to fill in the sentences below.

The \_\_\_\_\_ is lighter than the \_\_\_\_\_.

The \_\_\_\_\_ is heavier than the \_\_\_\_\_.



4. Look at the balancing scales below.

Josh says the chick is heavier than the bunny because it weighs five cubes.

Alisha says the bunny and the chick weigh the same.

Who do you agree with?

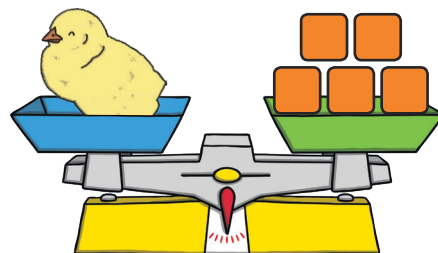
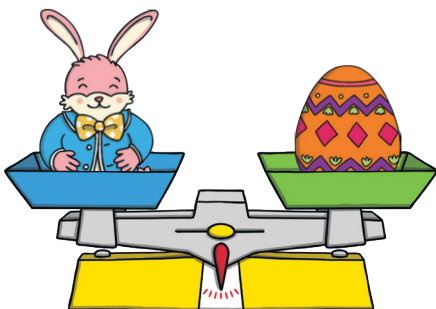
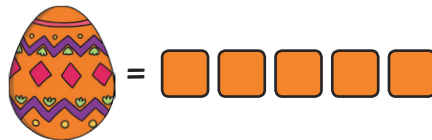
---

---

Why do you agree?

---

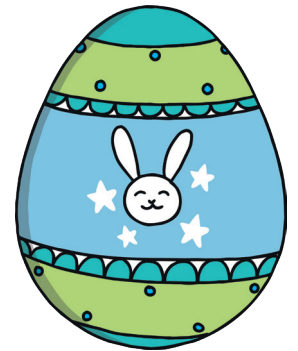
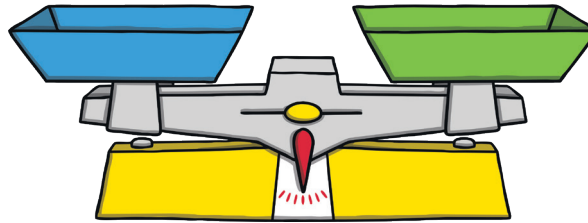
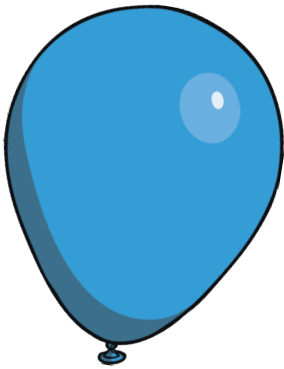
---



## Easter Weight

5. The class are deciding which weighs more, the balloon or the Easter egg. They are going to check by using the scales. Tick the correct sentence below.

- The Easter egg will go down because it is heavier.
- The Easter egg will go down because it is lighter.
- They will balance because they are both blue.
- The balloon will go down because it is heavier.

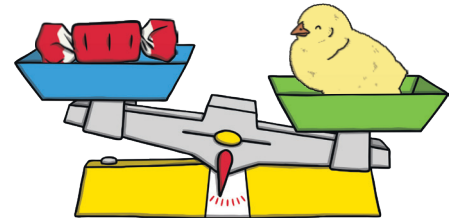
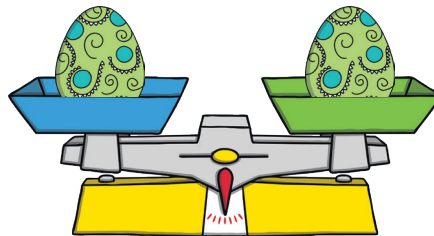
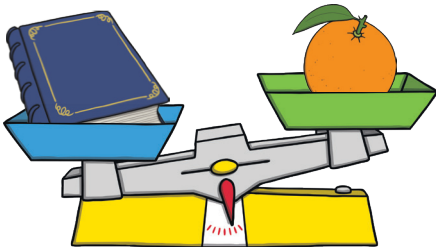


6. Fill in the missing gaps to make the sentences correct.

The \_\_\_\_\_ is lighter than the \_\_\_\_\_.

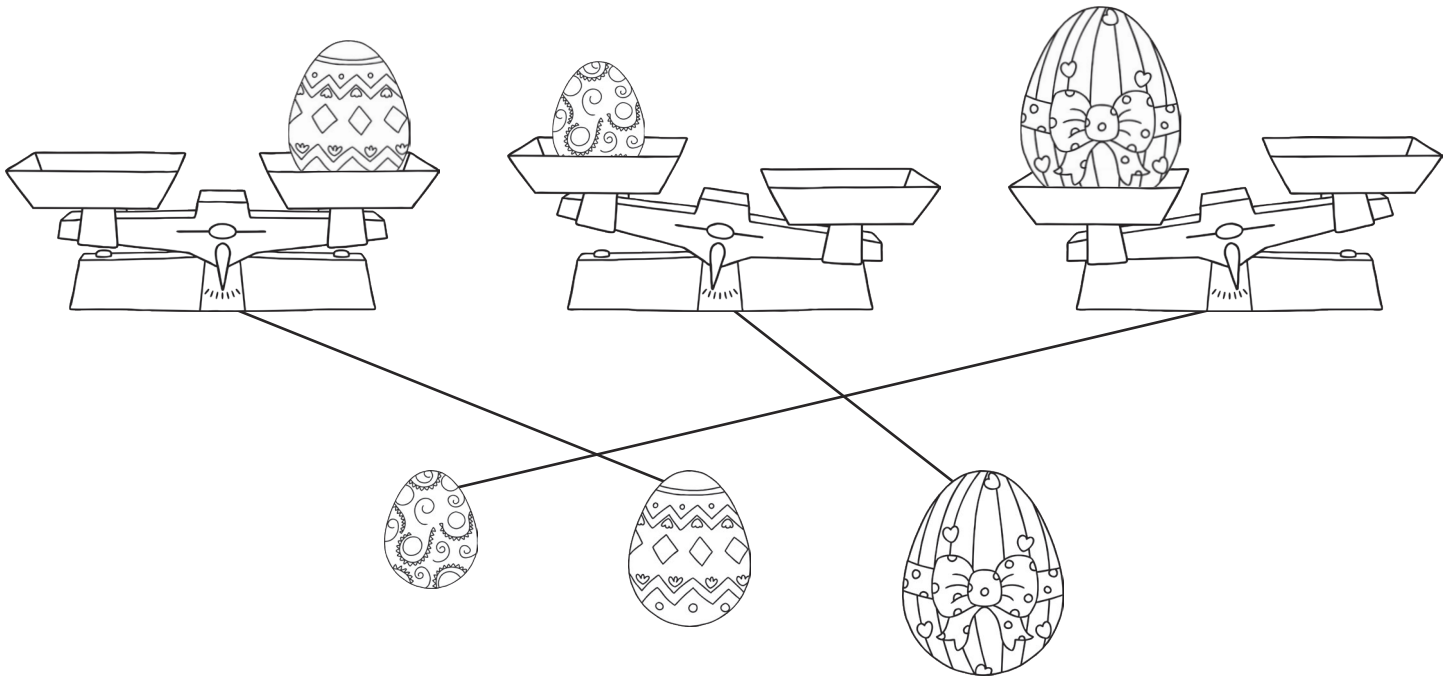
The \_\_\_\_\_ is heavier than the \_\_\_\_\_.

The \_\_\_\_\_ is equal to the \_\_\_\_\_.



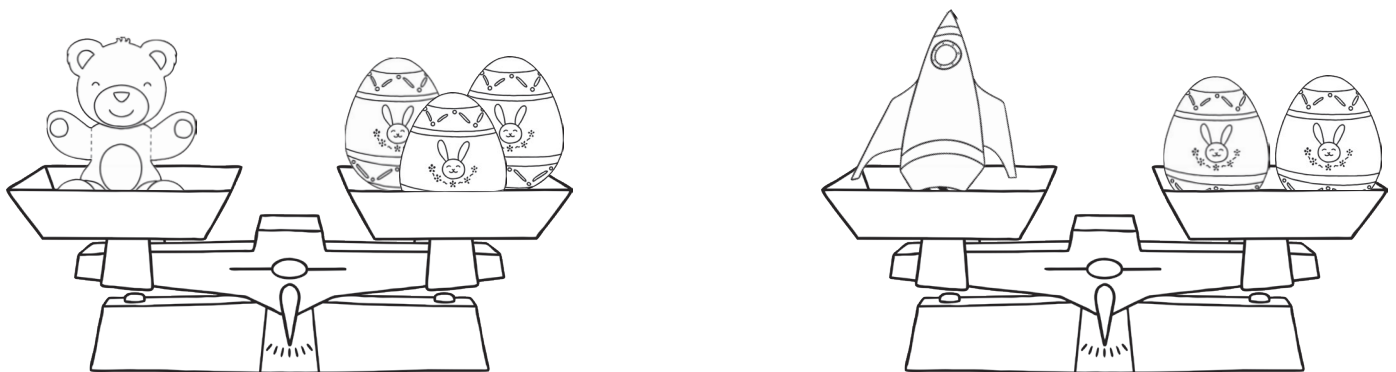
# Easter Weight Answers

1. Draw a line to match the Easter egg with the correct scale.



2. Which sentences are true? Tick them.

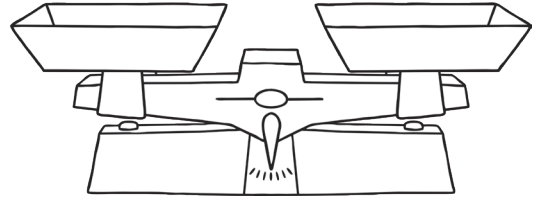
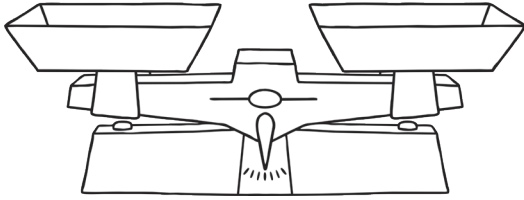
- The teddy bear is heavier than the rocket.**
- The rocket is heavier than the teddy bear.
- The teddy bear is lighter than the rocket.
- The rocket is lighter than the teddy bear.**
- The teddy bear and the rocket weigh the same amount.



# Easter Weight **Answers**

3. Can you make your own Easter balancing scales for your partner? Ask your partner to fill in the sentences below.

**Children's own responses.**



4. Look at the balancing scales below.

Josh says the chick is heavier than the bunny because it weighs five cubes.

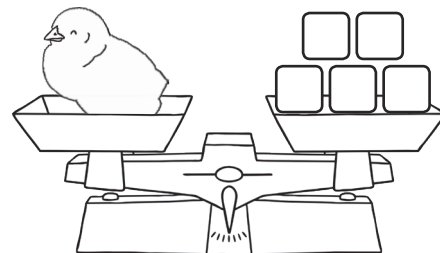
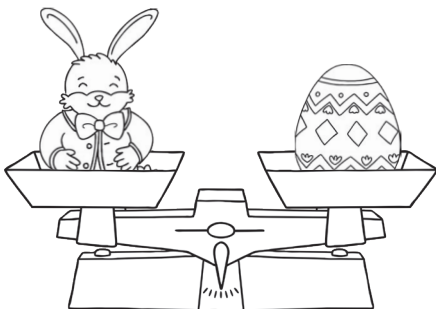
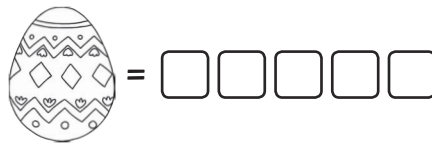
Alisha says the bunny and the chick weigh the same.

Who do you agree with?

**Alisha**

Why do you agree?

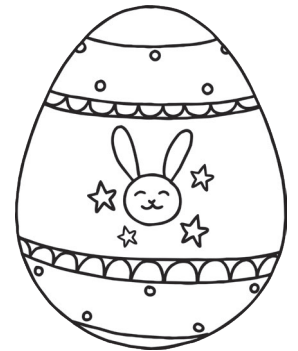
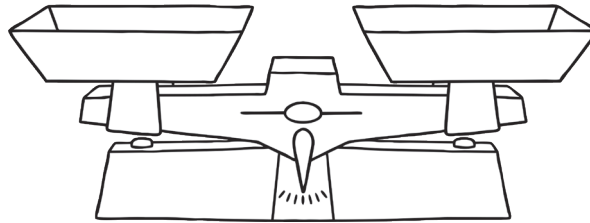
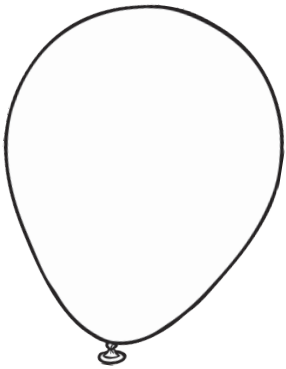
**I agree because the Easter egg is equal to the weight of five cubes, which is equal to the weight of the chick.**



## Easter Weight **Answers**

5. The class are deciding which weighs more, the balloon or the Easter egg. They are going to check by using the scales. Tick the correct sentence below.

- The Easter egg will go down because it is heavier.**
- The Easter egg will go down because it is lighter.
- They will balance because they are both blue.
- The balloon will go down because it is heavier.



6. Fill in the missing gaps to make the sentences correct.
- The sweet is lighter than the chick.**
- The book is heavier than the orange.**
- The Easter egg is equal to the Easter egg.**

