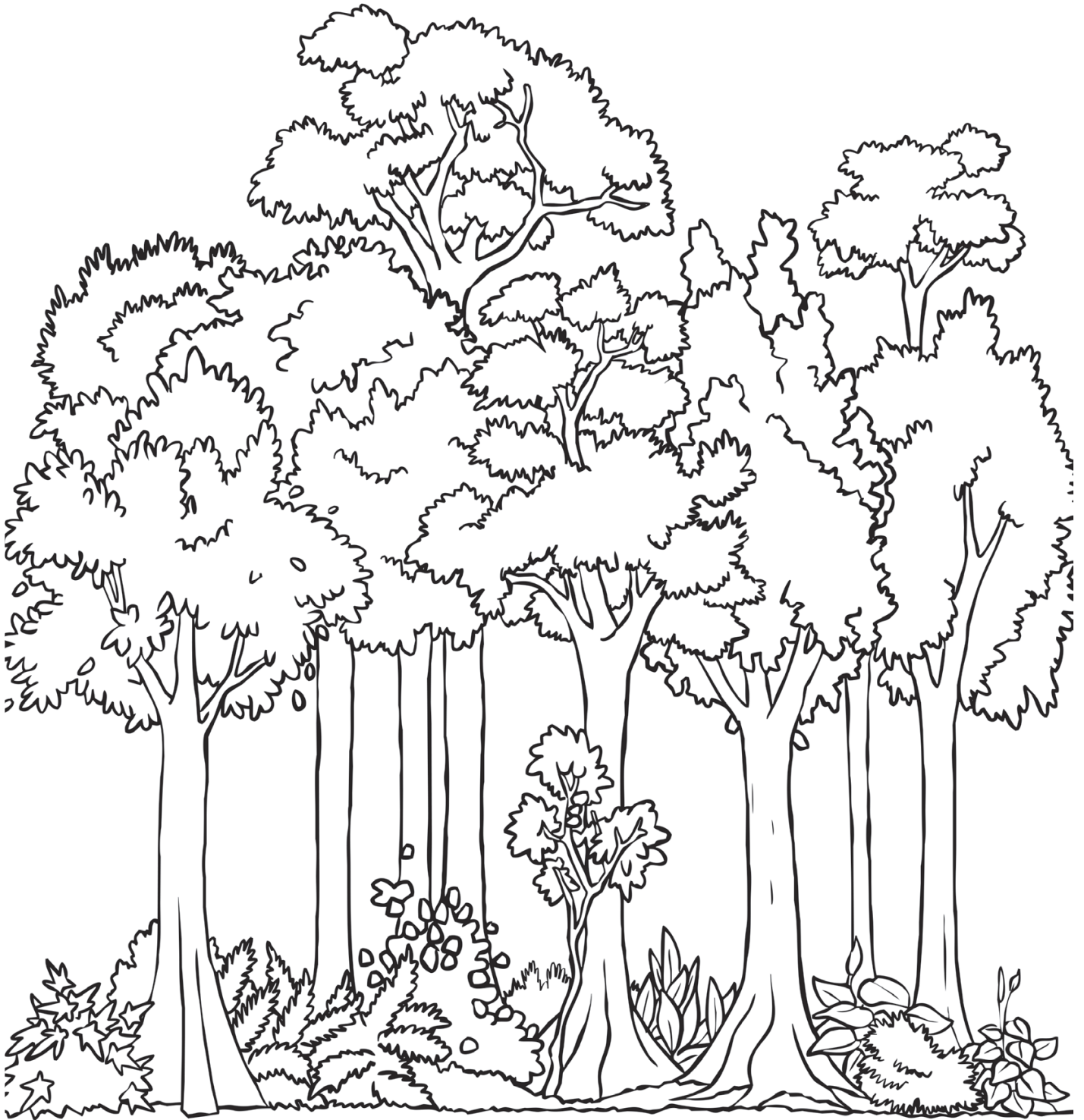


Animals in the Layers of the Rainforest

Layers



1. Cut the labels for the layers of the rainforest and place them in order from the lowest to the highest layer. The first one has been done for you.

Forest floor

- Not good at climbing
- Can camouflage

Understory

- Can climb to this layer
- Hides away in the plants

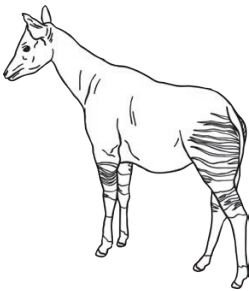
Emergent Layer

- Have wings
- Flying or gliding
- Good climbers

Canopy

- Long arms
- Swinging
- Claws for climbing

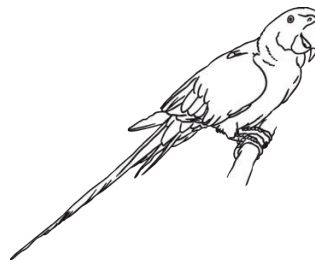
2. Draw the animals in the rainforest layers picture.



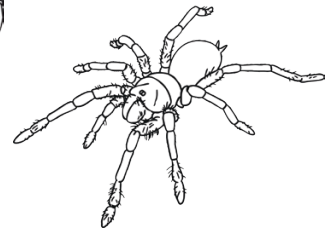
okapi (a giraffe-like mammal)



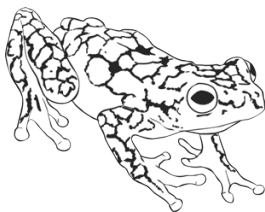
giant anteater (a large mammal)



blue and yellow macaw (a parrot)



Brazilian salmon tarantula (a large spider)



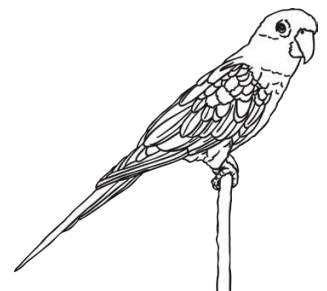
poison frog (an amphibian)



orangutan (a great ape)



golden lion tamarin (a monkey)



sun conure (a parrot)