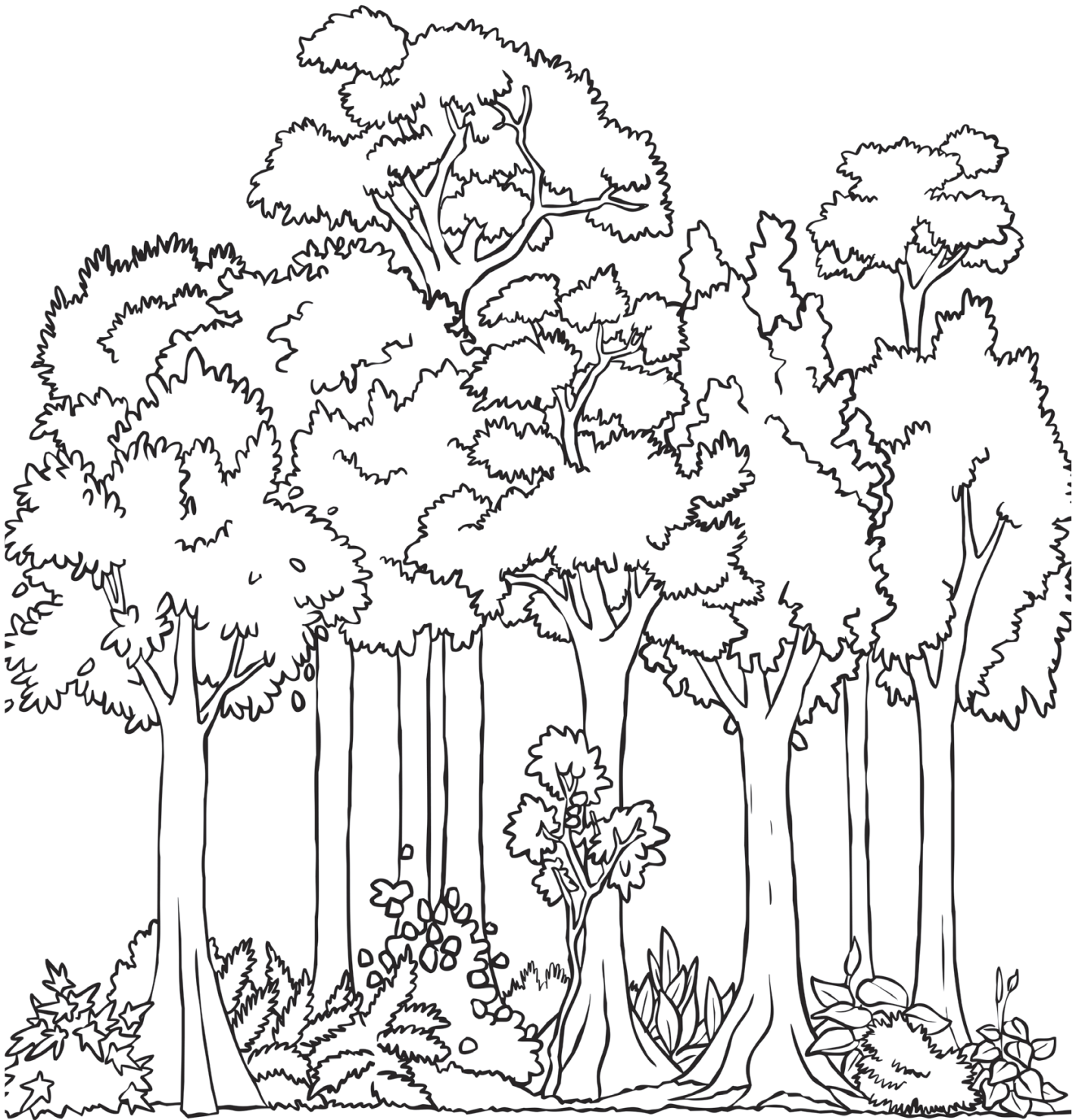


Animals in the Layers of the Rainforest

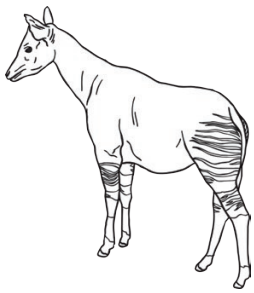
| Layer | Animals |
|-----------------------------------------------------------------------------------------------------------------------------------------------------------|---------|
| | |
| | |
| | |
| <p>Forest Floor Animals may have the ability to camouflage themselves against soil, tree trunks and leaves. They are not good at climbing.</p> | |



1. Cut out the labels for the layers of the rainforest and place them in order from the lowest to the highest layer. The first one has been done for you.

| | |
|-----------------------------------------------------------------------------------------------------------------------------------------------------------|---------------------------------------------------------------------------------------------------------------------------------|
| <p>Forest Floor Animals may have the ability to camouflage themselves against soil, tree trunks and leaves. They are not good at climbing.</p> | <p>Understory Animals can climb to this layer and may try to hide away from predators in the flowers and plants.</p> |
| <p>Emergent Layer Animals have wings for flying or gliding; or are very good climbers.</p> | <p>Canopy Animals have long arms for swinging or claws for climbing.</p> |

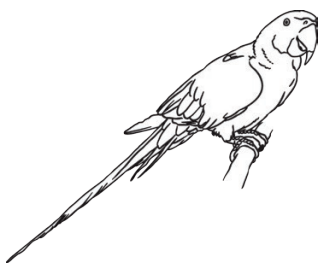
2. Write the name of the animal beside the layer it lives in.



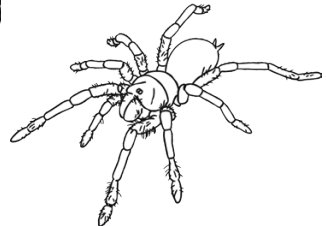
okapi (a giraffe-like mammal)



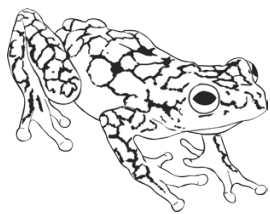
giant anteater (a large mammal)



blue and yellow macaw (a parrot)



Brazilian salmon tarantula (a large spider)



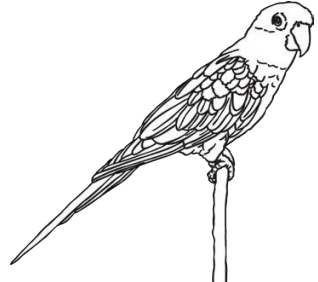
poison frog (an amphibian)



orangutan (a great ape)



golden lion tamarin (a monkey)



sun conure (a parrot)

3. Draw the animals in the rainforest layers picture.